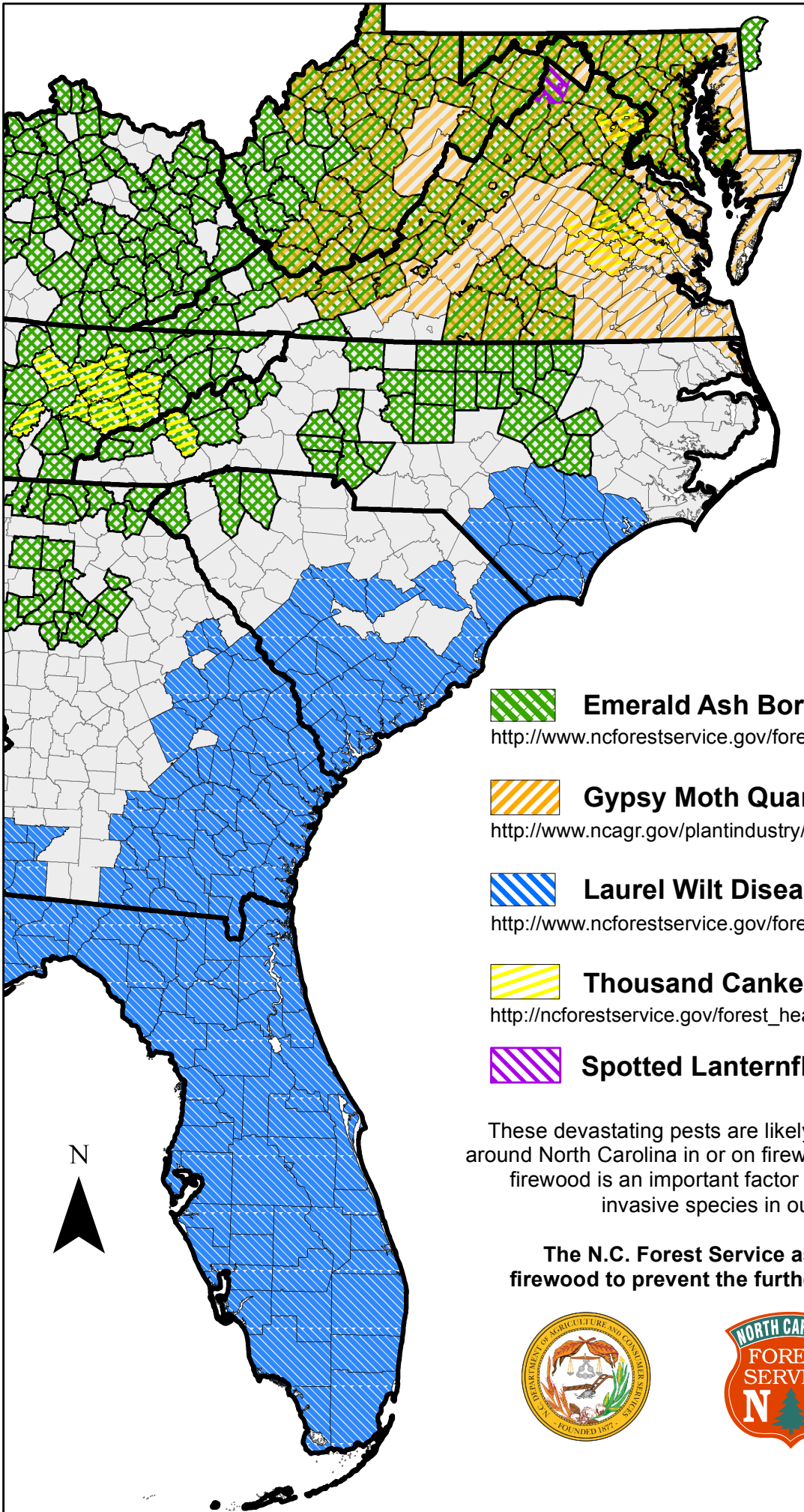


# Where are they now?

## Monitoring Firewood-Vectored Invasive Forest Pests in North Carolina



**Emerald Ash Borer**

[http://www.ncforestservice.gov/forest\\_health/fh\\_eabfaq.htm](http://www.ncforestservice.gov/forest_health/fh_eabfaq.htm)



**Gypsy Moth Quarantine**

<http://www.ncagr.gov/plantindustry/plant/entomology/gm.htm>



**Laurel Wilt Disease**

[http://www.ncforestservice.gov/forest\\_health/forest\\_health\\_laurelwiltfaq.htm](http://www.ncforestservice.gov/forest_health/forest_health_laurelwiltfaq.htm)



**Thousand Cankers Disease**

[http://ncforestservice.gov/forest\\_health/forest\\_health\\_thousandcankers.htm](http://ncforestservice.gov/forest_health/forest_health_thousandcankers.htm)



**Spotted Lanternfly**

These devastating pests are likely to be brought into or moved around North Carolina in or on firewood. The use of local or treated firewood is an important factor in preventing the spread of invasive species in our state's forests.

**The N.C. Forest Service asks that you use local firewood to prevent the further spread of forest pests.**



Map Created 3/5/2018  
by Kelly Oten - FHM Coordinator